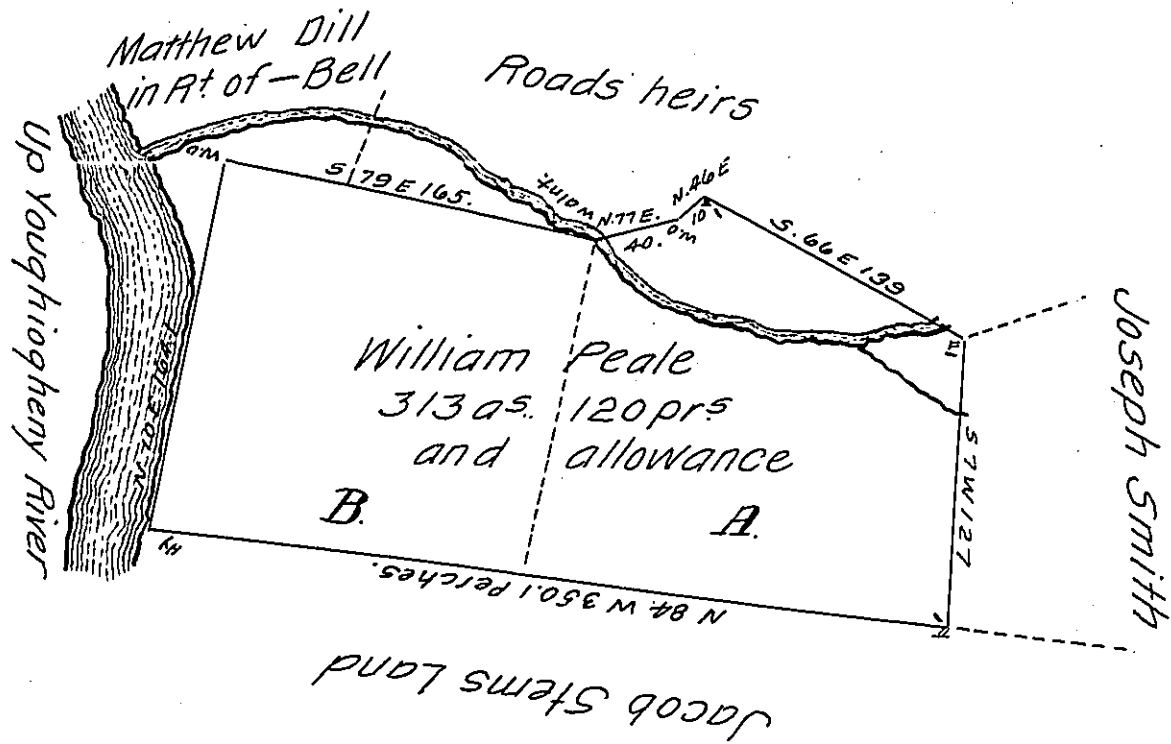


FORM NO 1.



In pursuance of an Application granted to W<sup>m</sup> Peale, N<sup>o</sup> 2837 dated 5<sup>th</sup> April 1769. Surveyed the above described tract of Land on the 5<sup>th</sup> day of August 1828. Containing three hundred and thirteen acres, one hundred and twenty perches and the allowance proportioned at six per cent for Roads &c. Situate adjoining land granted to Joseph Bealer at the mouth of Jacobs Creek in South Huntington township in the County of Westmoreland.

Gabriel Hiester, Esquire } S. L. Carpenter D.S.  
 Surveyor General of Penna }

N.B. The above described tract of land was Surveyed on two Warrants. the part marked A. is part of a larger tract Surveyed on a Warrant granted to Mary Hay dated January 29<sup>th</sup> 1787. the part marked B. was Surveyed on a warrant granted to John Stall dated November 7<sup>th</sup> 1772.

Mary Hay - Pat'd

J. Stall - not Pat'd

S. L. C.

IN TESTIMONY that the above is a copy of the original remaining on file in the Department of Internal Affairs of Pennsylvania, made conformably to an Act of Assembly approved the 16th day of February, 1833, I have hereunto set my Hand and caused the Seal of said Department to be affixed at Harrisburg, this nineteenth day of January 1909.

Henry Howell  
 Secretary of Internal Affairs.